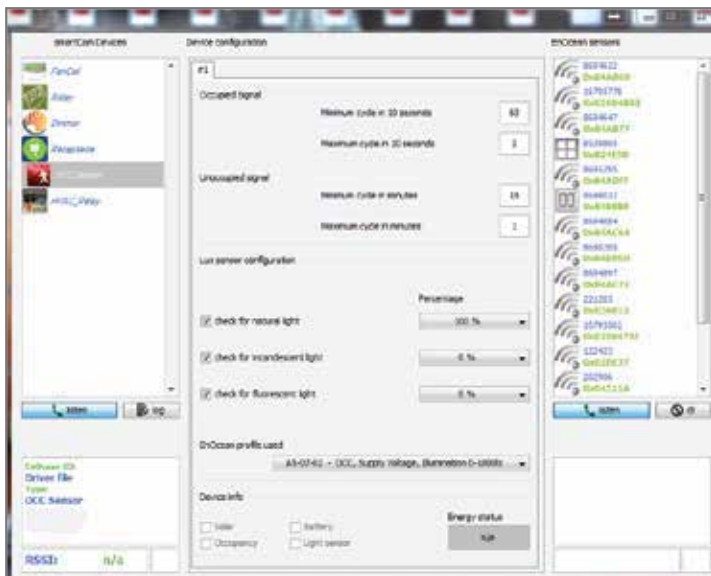


Basic Operation

The Wireless Light Sensors have built-in solar cells that draw on available ambient light to power themselves and can operate for days in total darkness. The Light Sensor is designed to operate for light levels from 0 to 94.8 footcandles (0 to 1020 LUX). This is a revolutionary product for daylight harvesting applications to meet energy saving initiatives. Optimally place the sensor in the desired lighted space, pair it with an Entuit receiver for load control and your installation is complete. The self-powered wireless light sensor design also overcomes the placement and coverage challenges of traditional light sensors. They may be mounted wherever needed without moving or installing new wiring or conduit.



First Ever Fully Remotely Configurable Light / Occupancy Sensor with AirConfig Tool.



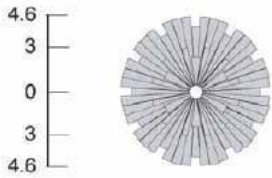
- Occupied Signal Cycle Options.
- Unoccupied Signal Cycle Options.
- Lux Sensor Configuration
- Remotely Change EnOcean Profile

*This tool can be used for remote commissioning, as well as linking other products together.

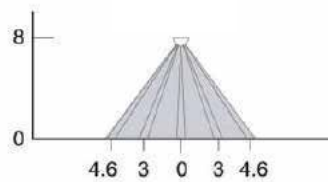
Applications

- Retrofits
- New construction
- Restrooms
- Conference rooms
- Private offices
- Classrooms
- Executive Offices
- Daycare facilities
- Daylight Harvesting
- Lighted Hallways
- Perimeter Zones

TOP VIEW



SIDE VIEW



Features

- **Daylight Harvesting:** light sensor has both switched and dimmed capabilities, both are dependent on the application and Receivers used
- **No Power Consumption:** when enough natural light is available, solar power provides the energy to keep the device ON while sensor technology turns the lights OFF, eliminating additional expenses to the enduser's energy bill
- **No External Power Required:** with no wiring limitations, this enables the installer to place the sensor in the optimal location of any application to capture optimal daylight readings
- **Self-Powered & Self-Charging:** angled solar cells are optimal for light collection enabling the sensor to capture maximum ambient light over flat solar cells
- **Quick Charge Time to Operation:** self-powered technology enables the sensor to be operational after a minimum charge time of 1 minute
- **True Wireless:** sensors are self-powered and communicate with all Entuit and EnOcean Receivers via radio frequency
- **No Additional Materials:** self-powered wireless technology eliminates the need to pull additional wire and conduit making installation quick and easy, while diminishing labor costs
- **No External Power Required:** exclusive "power-less" technology significantly reduces call backs and maintenance for additional savings
- **Days of Stored Power:** solar panel provides power for the device to maintain a sufficient charge to operate for long periods of time without light
- **Unlimited Energy Savings:** wireless technology supports daylight harvesting and manual override options with no additional wiring

Frequency	315 / 868 / 902 MHz
Range	50-150 ft
Photocell	0-94.8FC (0-1020 LUX)
Transmission Interval	User-defined. Set in the config tool.
Minimum Light Required to Charge	4FC (40 LUX)
Solar Cell Operating Range	4-100FC (40-1000 LUX)
Minimum Charge Time to Begin	1 minute @ 20 FC (200 LUX)
Operation	
Full Charge Time	~8 hours @ 100FC (1000 LUX)
Maintain Charge Time	3 hours per 24 hours @ 20 FC (200 LUX)
Operation Life at Full Charge	7 Days
Optional Battery Life	10 Years
Operating Temperature Range	32°F to 104°F (0°C to 40°C)
Storage Temperature Range	-4°F to 158°F (-20°C to 70°C)
Relative Humidity	0% to 95%, non-condensing
Usage	Indoor
Mounting Height	8-12 feet.

Motion Option Visuals & Specifications

Motion Specifications

Range	Up to 100 feet
Frequency	315 / 868 / 902 MHz
Transmission Interval	60 seconds
Minimum Light Required	4FC (40 LUX)
Minimum Charge Time to Begin Operation	1 minute @ 20 FC (200 LUX)
Maximum Charge Time	8 hours @20 FC (200 LUX)
Maintain Charge Time	3 hours per 24 hours @20 FC (200 LUX)
Operating Temperature Range	32°F to 104°F (0°C to 40°C)
Storage Temperature Range	-4°F to 158°F (-20°C to 70°C)
Relative Humidity	0% to 95%, non-condensing
Usage	Indoors only
Mounting Height	8-12 feet

